
No. F054-3360
ISSUED: AUG. 6, 2010
REVISED: JUN. 22, 2011
SERVICE INFORMATION



**HOSHIZAKI
FLAKE ICE MAKER**

**MODEL FM-750AKE(-N)
FM-1000AKE(-N)**

**PARTS LIST
(HE)**

K-1 AUG. 2010

AUXILIARY CODE

U - 1

The auxiliary code is the first two characters in the serial number. The first character indicates the production year. Years progress or regress in alphabetical order. The series of letters and skipped letters depend on UL listing, production, and model. See the auxiliary code(s) and corresponding year(s) on the front cover.

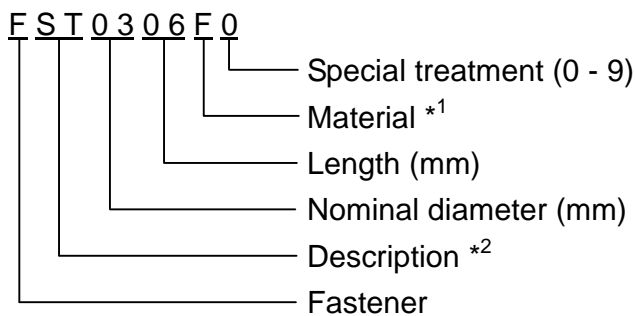
The second character indicates significant part changes within the same year. Base is "1" and this number advances for each change. If there is no significant part change at the turn of the year, this number starts from "0."

MARKS LOCATED UNDER THE AUXILIARY CODE

- = Part deleted.
- x = Part deleted and replaced by "o" part.
- o = New part in place of "x" part.

FASTENER PART NUMBER

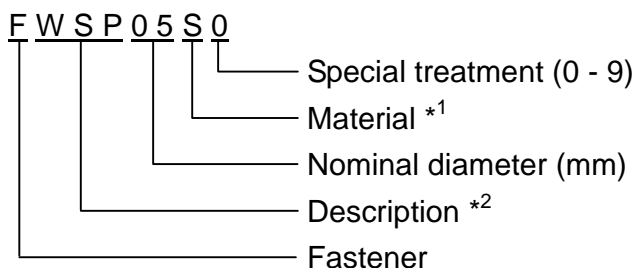
SCREWS



*¹ Material

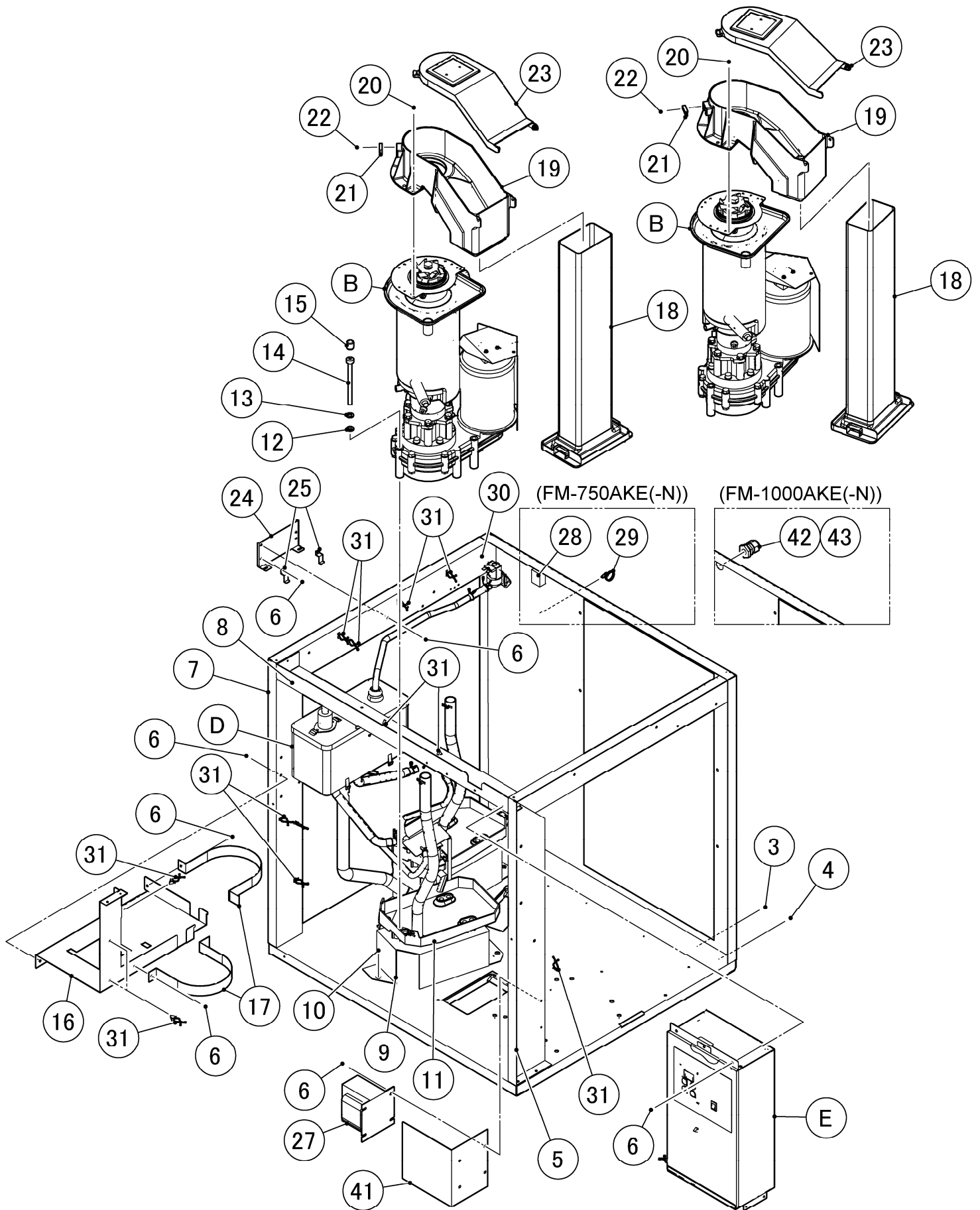
- F: Steel
- S: Austenitic stainless steel
- M: Martensitic stainless steel
- B: Copper alloy
- P: Polycarbonate
- N: Polyamide
- V: PVC
- A: ABS
- X: Polyacetal
- L: Aluminum

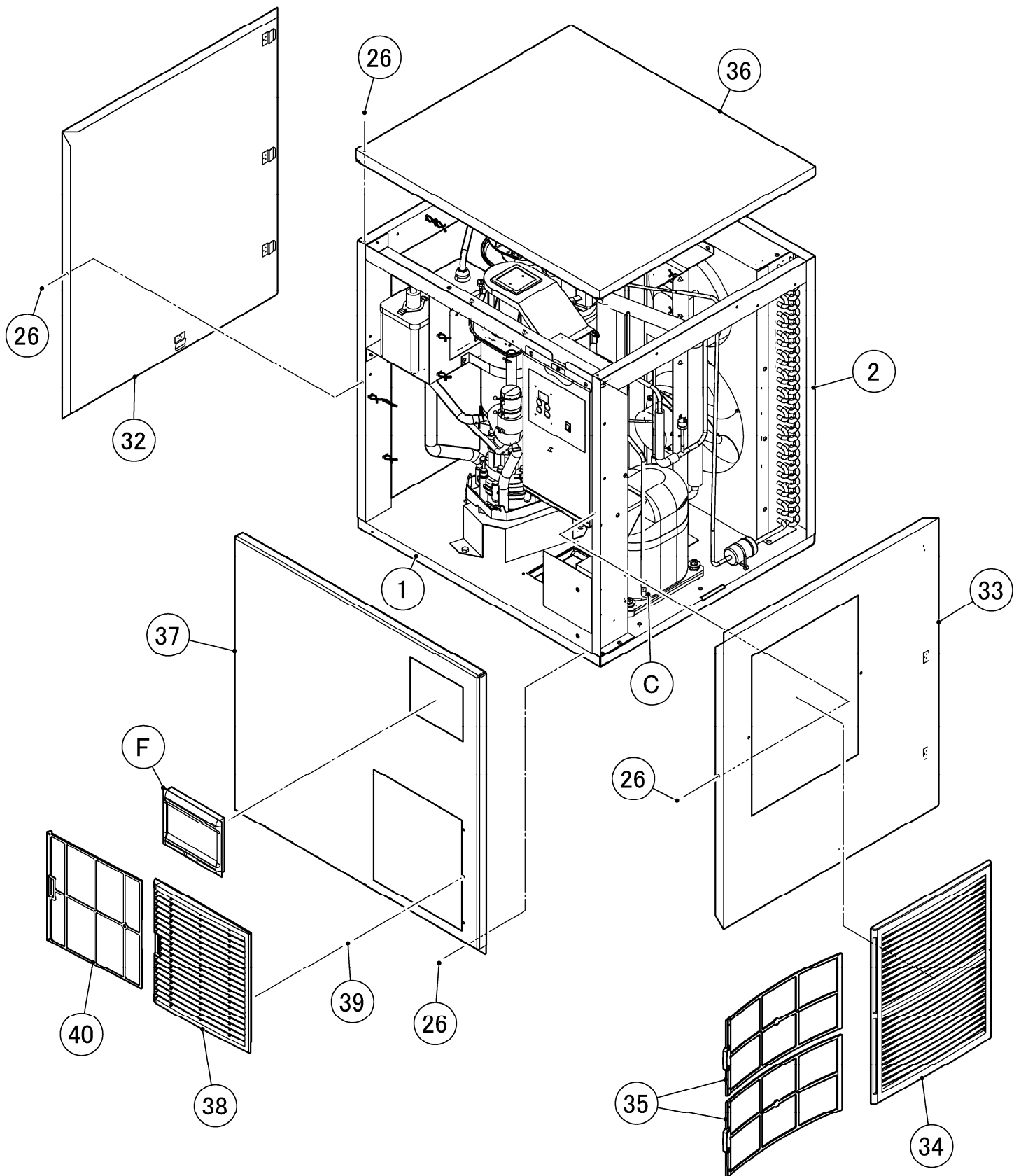
NUTS & WASHERS



*² Description

- First letter
- S: Machine screw
- T: Tapping screw
- M: Wood screw
- B: Bolt
- W: Washer
- N: Nut



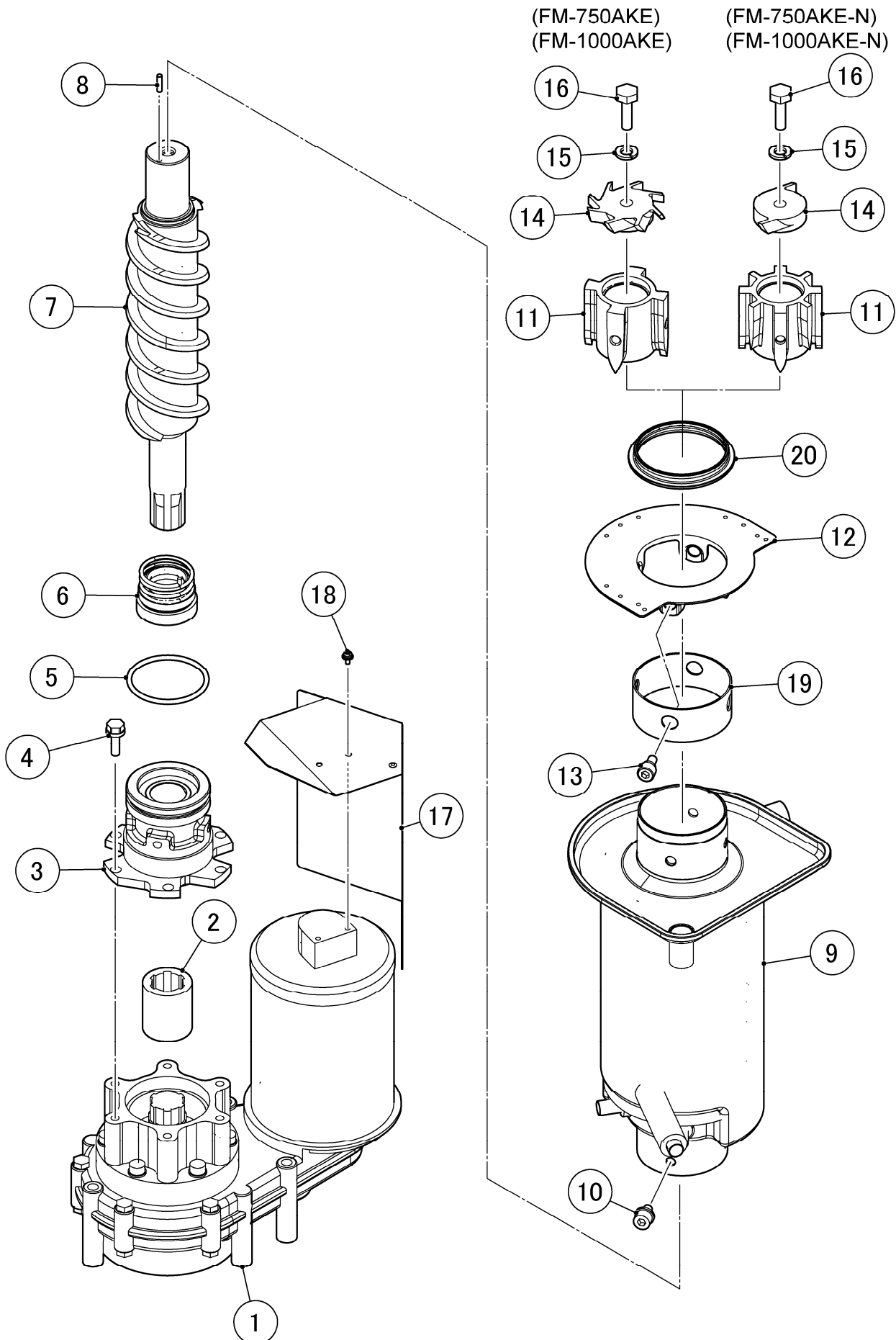


HE

MODEL: FM-750AKE(-N) FM-1000AKE(-N)		TITLE: A. ICE FLAKER ASSY					
INDEX NO.	DESCRIPTION	MATERIAL OR MODEL NUMBER	PART NUMBER	REQ'D NUMBER			
				K-1			
B	ICE MAKING UNIT	FM-750/1000AKE	259147A02	2			
		FM-750/1000AKE-N	259147A03	2			
C	REFRIGERATION CIRCUIT	FM-750AKE(-N)	120943A01	1			
		FM-1000AKE(-N)	120942A01	1			
D	WATER CIRCUIT		120946A01	1			
E	CONTROL BOX ASSY	FM-750AKE(-N)	259156A02	1			
		FM-1000AKE(-N)	259156A01	1			
F	WINDOW PANEL ASSY		348243A03	1			
G	LABEL LOCATION	FM-750AKE(-N)	259135A01	1			
		FM-1000AKE(-N)	259135A03	1			
J	ACCESSORIES	FM-750AKE(-N)	A02214-01	1			
		FM-1000AKE(-N)	A02215-01	1			
1	CHASSIS		259143G01	1			
2	REAR PANEL	FM-750AKE(-N)	120940M02	1			
		FM-1000AKE(-N)	120940M01	1			
3	HEX HEAD BOLT (SPRING WASHER AND FLAT WASHER)		FBK0512S0	2			
4	TRUSS HEAD TAPPING SCREW T2		FT20408F0	4			
5	SIDE FRAME (R)		120941M01	1			
6	TRUSS HEAD MACHINE SCREW		FST0408F0	30			
7	SIDE FRAME(L)		115584-01	1			
8	FRONT FRAME		259146M01	1			
9	BRACKET - GEAR MOTOR		374371G01	2			
10	HEX HEAD BOLT		FBH0812S0	6			
11	DRAIN PAN		323765G01	2			
12	SEAL WASHER		458299-01	6			
13	SPRING WASHER		FWSP08S0	6			
14	HEXAGON SOCKET HEAD CAP SCREW		461285-01	6			
15	VINYL CAP		451272-01	6			
16	BRACKET-RESERVOIR		259148M01	1			
17	BAND		475195M01	2			
18	BIN CONTROL		375652G03	2			
19	SPOUT - 70		373329G01	2			

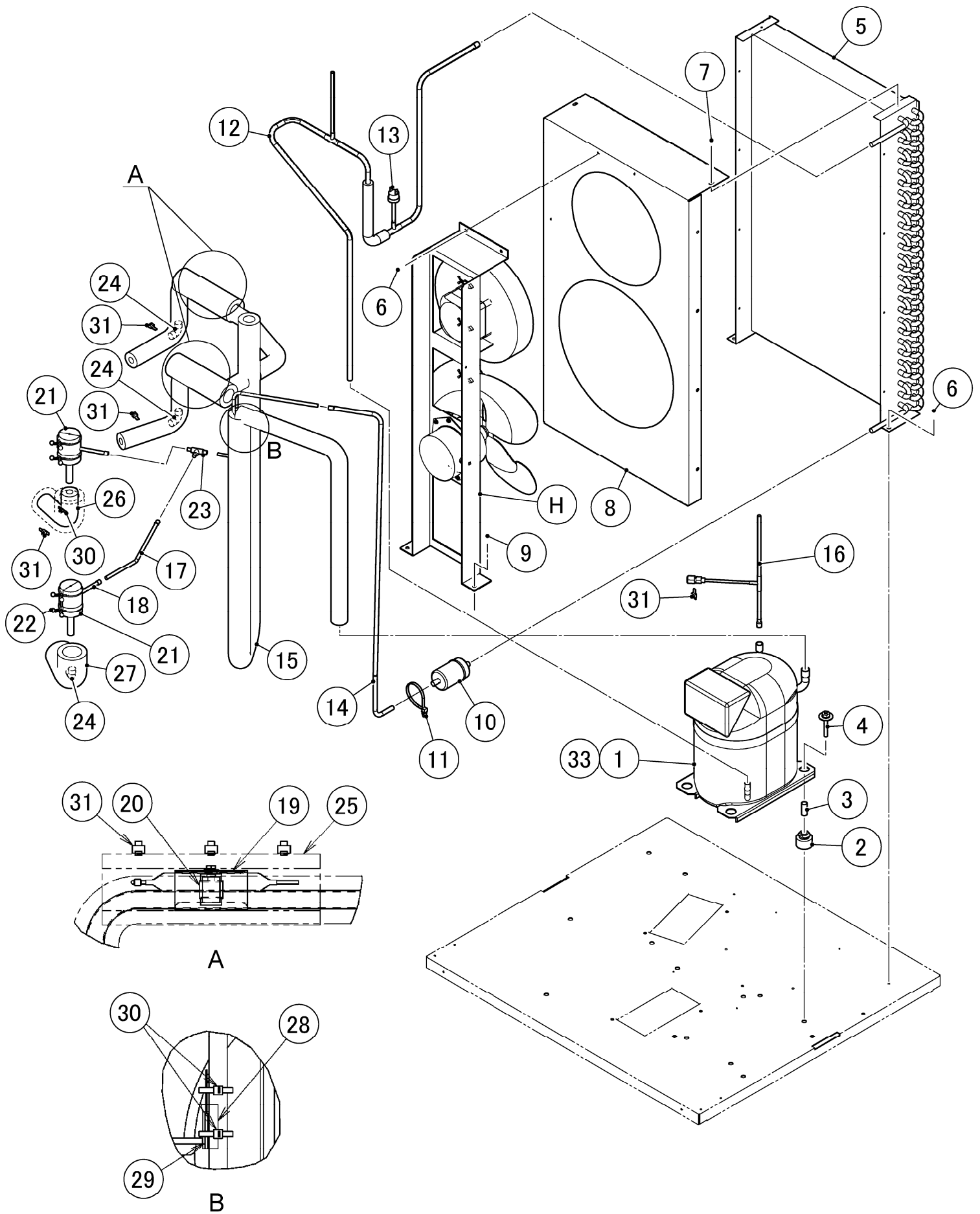
HE

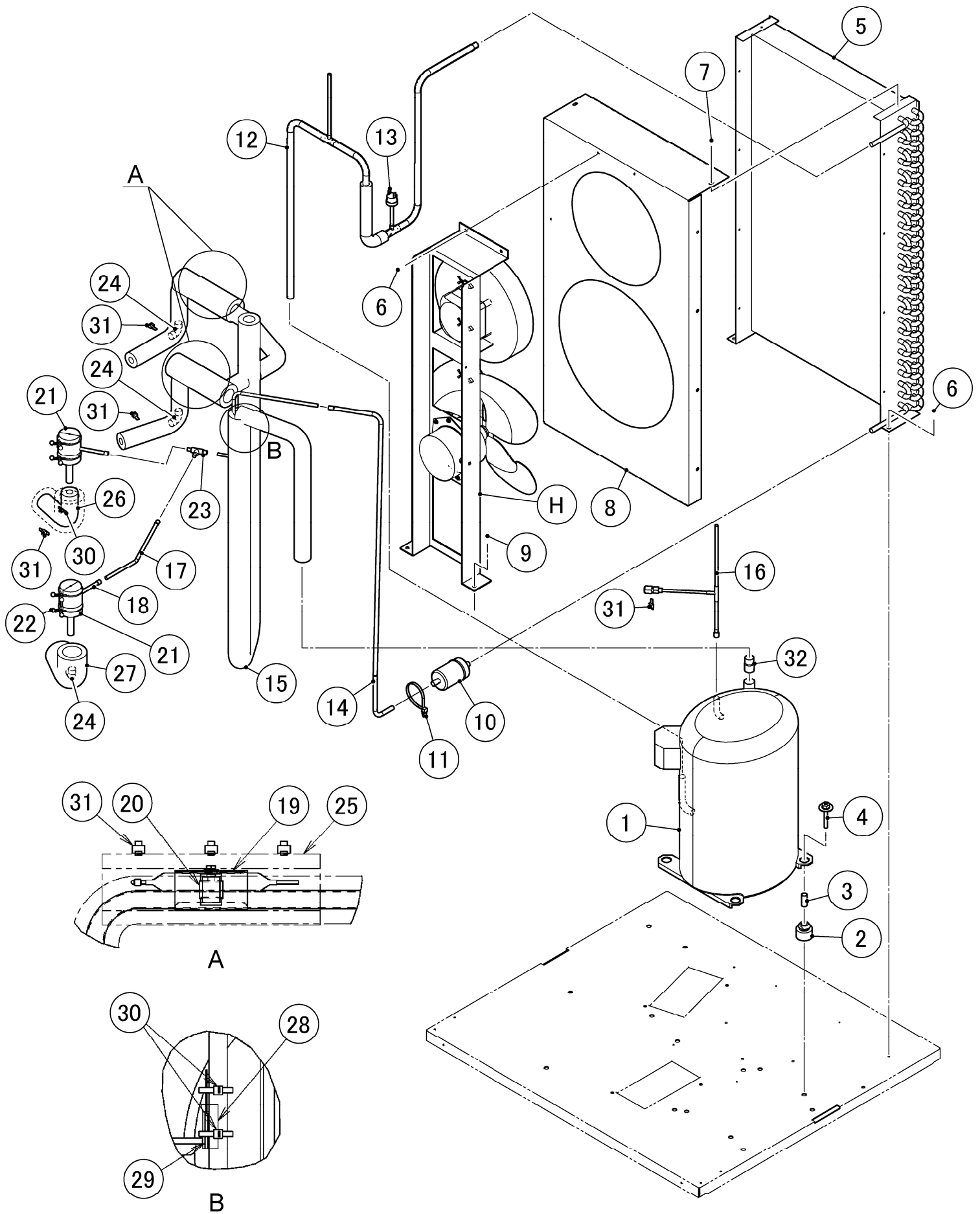
MODEL: FM-750AKE(-N) FM-1000AKE(-N)		TITLE: A. ICE FLAKER ASSY					
INDEX NO.	DESCRIPTION	MATERIAL OR MODEL NUMBER	PART NUMBER	REQ'D NUMBER			
				K-1			
20	HEX HEAD BOLT (SPRING WASHER AND FLAT WASHER)		FBK0408S0	6			
21	LEAD SWITCH		431788-01	2			
22	TRUSS HEAD TAPPING SCREW T2		FT20308M0	2			
23	SPOUT COVER - 70		256359G01	2			
24	BRACKET-WATER SUPPLY		475199M01	1			
25	BRACKET (A) - WATER SUPPLY		474638M01	2			
26	TRUSS HEAD MACHINE SCREW		FST0408S0	5			
27	TRANSFORMER		469405-01	1			
28	CONNECTOR	FM-750AKE(-N)	P00246-01	1			
29	PUSH MOUNT TIE	FM-750AKE(-N)	436156-01	1			
30	PAN HEAD MACHINE SCREW (SPRING WASHER AND FLAT WASHER)		FSK0408S0	1			
31	CLAMP	No.249	427902-03	15			
32	SIDE PANEL(L)		234110G01	1			
33	SIDE PANEL (R)		258142G01	1			
34	LOUVER		1A1329-01	1			
35	AIR FILTER		2A4128G01	2			
36	TOP PANEL		259153M01	1			
37	FRONT PANEL (A)		120949M01	1			
38	LOUVER A		1A0547-01	1			
39	PUSH RETAINER		4A2414-01	3			
40	AIR FILTER A		2A2062G01	1			
41	COVER - TRANSFORMER		475235M01	1			
42	PERFECT LOCK	FM-1000AKE(-N)	466342-01	1			
43	POWER SUPPLY CORD	FM-1000AKE(-N)	466418-01	1			



HE

MODEL: FM-750AKE(-N) FM-1000AKE(-N)		TITLE: B. ICE MAKING UNIT					
INDEX NO.	DESCRIPTION	MATERIAL OR MODEL NUMBER	PART NUMBER	REQ'D NUMBER			
				K-1			
1	GEAR MOTOR		466223-01	1			
2	COUPLING		414137-01	1			
3	HOUSING		206657G02	1			
4	HEX.HEAD BOLT W/WASHER (SW)		461888-01	6			
5	O-RING		7616-G065	1			
6	MECHANICAL SEAL		432492-01	1			
7	AUGER		120863G02	1			
8	PIN		713S-0416	1			
9	EVAPORATOR		258997G01	1			
10	SCREW		P01719-01	4			
11	EXTRUDING HEAD	FM-750/1000AKE	327097G02	1			
		FM-750/1000AKE-N	216531G02	1			
12	FLANGE - 70		372207M01	1			
13	SEAL BOLT - M8		P01768-01	4			
14	CUTTER	FM-750/1000AKE	317071-02	1			
		FM-750/1000AKE-N	327145-01	1			
15	SPRING WASHER		FWSP10S0	1			
16	SCREW-BOLT		458101-01	1			
17	COVER-GEAR MOTOR		475224G01	1			
18	PAN HEAD MACHINE SCREW (SPRING WASHER AND FLAT WASHER)		FSK0408S0	2			
19	BELT HEATER		469322-01	1			
20	PACKING - SPOUT		473494R01	1			





HE

MODEL: FM-750AKE(-N) FM-1000AKE(-N)		TITLE: C. REFRIGERATION CIRCUIT					
INDEX NO.	DESCRIPTION	MATERIAL OR MODEL NUMBER	PART NUMBER	REQ'D NUMBER			
				K-1			
H	FAN MOTOR ASSY		241617A01	1			
1	COMPRESSOR	FM-750AKE(-N)	4A1581-01	1			
		FM-1000AKE(-N)	466224-01	1			
2	GROMMET		434922-02	4			
3	SPACER		434921-01	4			
4	BOLT		436206-01	4			
5	CONDENSER-AIR COOLED		P00729-01	1			
6	TRUSS HEAD MACHINE SCREW		FST0408F0	4			
7	TRUSS HEAD TAPPING SCREW T2		FT20408F0	16			
8	SHROUD		114398-01	1			
9	HEX HEAD BOLT (SPRING WASHER AND FLAT WASHER)		FBK0512S0	2			
10	DRIER		462965-01	1			
11	TIE		436156-02	1			
12	COPPER TUBE(A) - H	FM-750AKE(-N)	259151G01	1			
		FM-1000AKE(-N)	259149G01	1			
13	PRESSURE SWITCH	R134a,R22,R404A COPPER TUBE A/H	459863-06	1			
14	COPPER TUBE(B) - H		374373M01	1			
15	COPPER TUBE(L)	FM-750AKE(-N)	120945G01	1			
		FM-1000AKE(-N)	120944G01	1			
16	COPPER TUBE-ACCESS VALVE		466222G01	1			
17	COPPER TUBE(E)/H		475197M01	1			
18	EXPANSION VALVE		453868-01	2			
19	HOLDER - EXP. VALVE 1/2		3A0112-01	2			
20	CLAMP		443461-01	2			
21	VALVE COVER		3Y3196P01	2			
22	CLAMP		P00752-01	4			
23	TEE		4R3125-01	1			
24	ELBOW		417395-03	4			
25	INSULATION TUBE		H72949B15	2			
26	INSULATION TUBE		H71333B35	2			
27	INSULATION TUBE		H73858B28	2			

HE

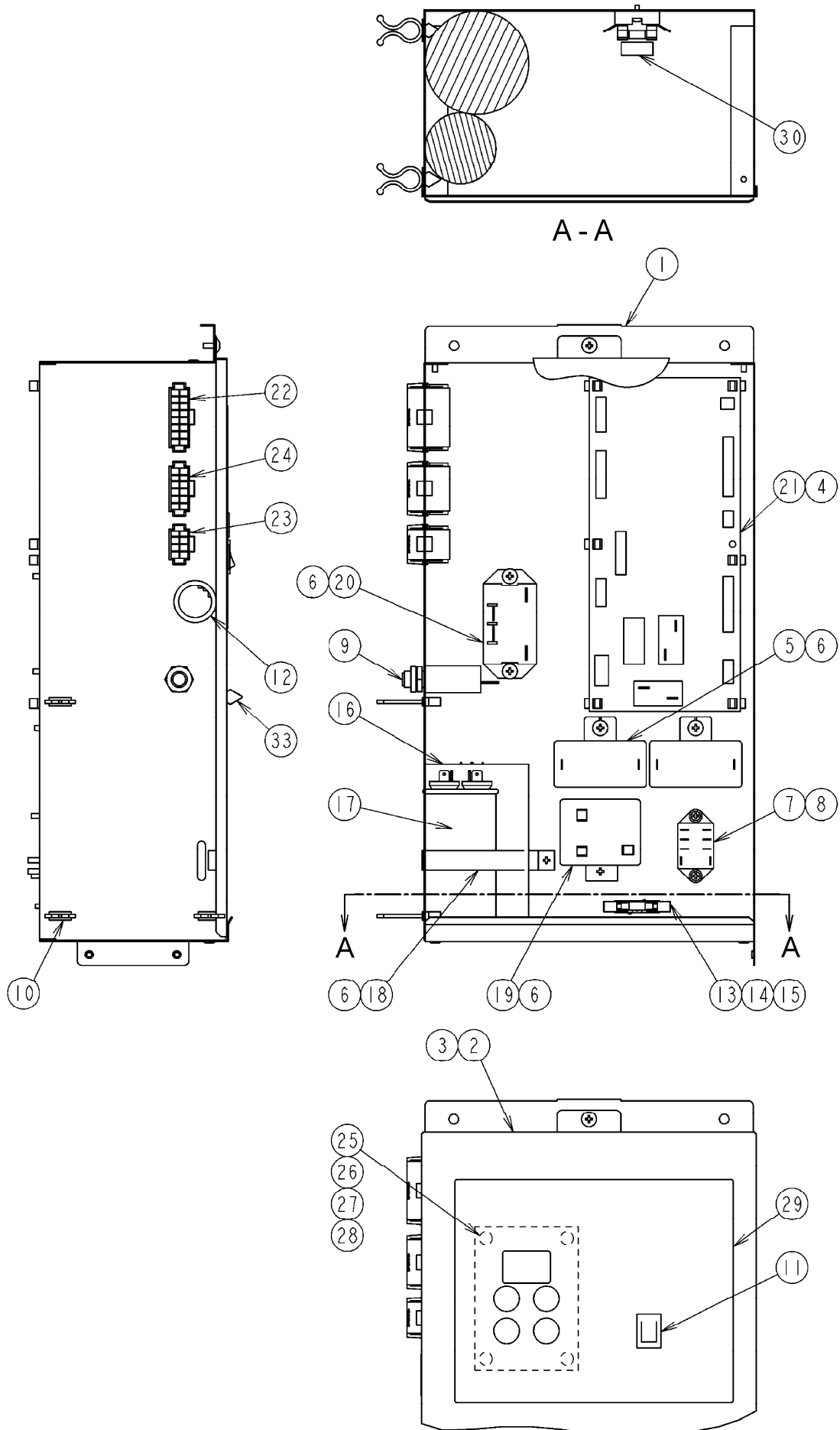
MODEL: FM-750AKE(-N) FM-1000AKE(-N)		TITLE: C. REFRIGERATION CIRCUIT					
INDEX NO.	DESCRIPTION	MATERIAL OR MODEL NUMBER	PART NUMBER	REQ'D NUMBER			
				K-1			
28	HOLDER - THERMISTOR	FM-750AKE(-N)	427430-01	1			
		FM-1000AKE(-N)	438247-01	1			
29	THERMISTOR ASSY		475407G01	1			
30	TIE	CV-150	7920-0003	6			
31	TIE	CV-200	7920-0010	14			
32	REDUCER	FM-1000AKE(-N)	420915-12	1			
33	PROTECTOR	FM-750AKE(-N)	4A1877-04	1			

HE

MODEL: FM-750AKE(-N) FM-1000AKE(-N)		TITLE: D. WATER CIRCUIT					
INDEX NO.	DESCRIPTION	MATERIAL OR MODEL NUMBER	PART NUMBER	REQ'D NUMBER			
				K-1			
1	WATER VALVE		452993-01	1			
2	HEX HEAD BOLT		FBH0408S0	2			
3	SILICONE HOSE		H11014060	1			
4	PIPE-WATER SUPPLY		374379M01	1			
5	HOSE CLAMP		435934-03	1			
6	HOSE CLAMP		435934-02	3			
7	RESERVOIR(B)		114487-01	1			
8	RESERVOIR COVER		112582-01	1			
9	COVER - RESERVOIR INLET		415094-01	1			
10	FLOAT SWITCH		458279-01	1			
11	HOSE (A)		374346R01	1			
12	HOSE CLAMP		427443-10	1			
13	HOSE (B)		374347R01	1			
14	HOSE CLAMP		427443-08	2			
15	WATER VALVE		468655-01	1			
16	VALVE BRACKET		461831-01	1			
17	HEX HEAD BOLT (SPRING WASHER AND FLAT WASHER)		FBK0508F0	2			
18	PAN HEAD MACHINE SCREW (SPRING WASHER AND FLAT WASHER)		FSK0408F0	2			
19	DRAIN PIPE		460263-01	1			
20	HOSE(B)		360004-01	1			
21	HOSE(C)		475198G01	2			
22	TEE		364488-01	2			
23	DRAIN PIPE		321035-01	1			
24	TRUSS HEAD TAPPING SCREW T2		FT20410S0	2			
25	FILTER		464377G01	1			
26	PVC HOSE (FOOD GRADE)		HD1923120	1			
27	PVC HOSE (FOOD GRADE)		HD1923250	1			
28	PVC HOSE (FOOD GRADE)		HD1923460	2			
29	PVC HOSE (FOOD GRADE)		HD0912050	1			
30	JOINT		450297-04	1			
31	PVC HOSE (FOOD GRADE)		HD0912400	1			
32	PVC HOSE (FOOD GRADE)		HD0912500	1			

HE

MODEL: FM-750AKE(-N) FM-1000AKE(-N)		TITLE: D. WATER CIRCUIT					
INDEX NO.	DESCRIPTION	MATERIAL OR MODEL NUMBER	PART NUMBER	REQ'D NUMBER			
				K-1			
33	CLAMP		423866-03	6			
34	TIE	CV-150	7920-0003	13			
35	CAP		417323-01	1			
36	NOISE KILLER		450363-01	2			

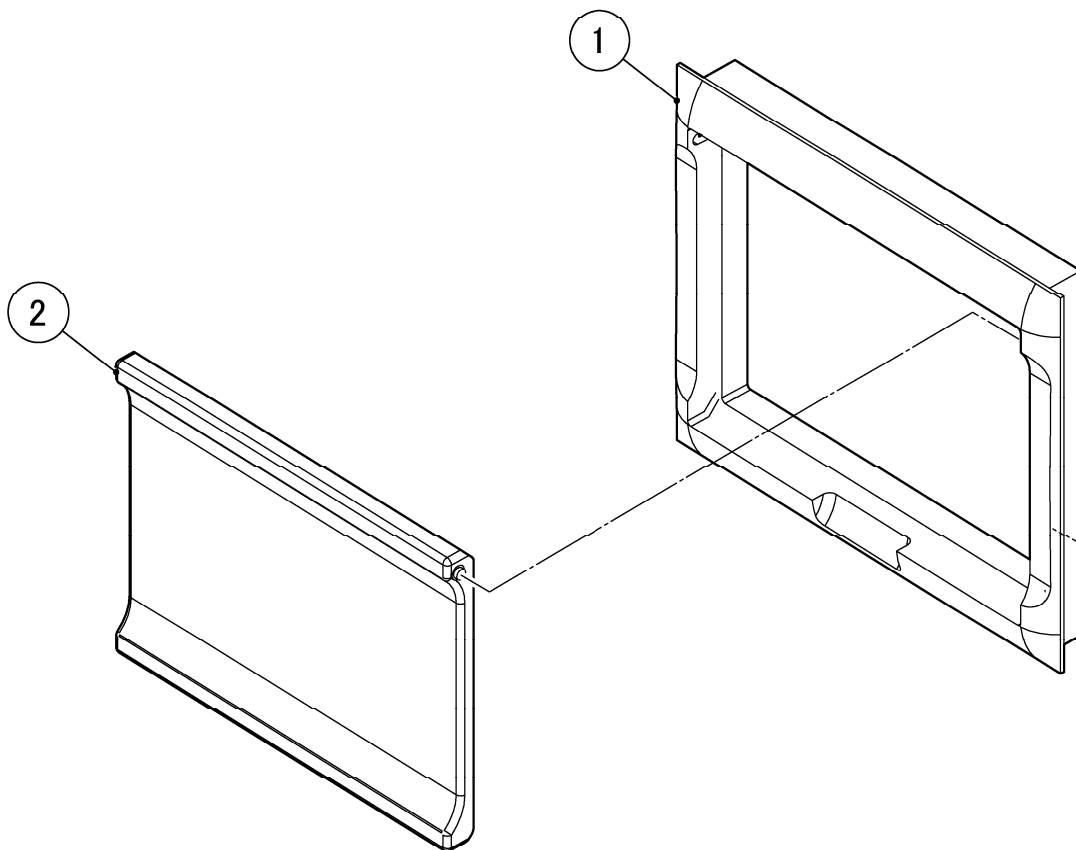


HE

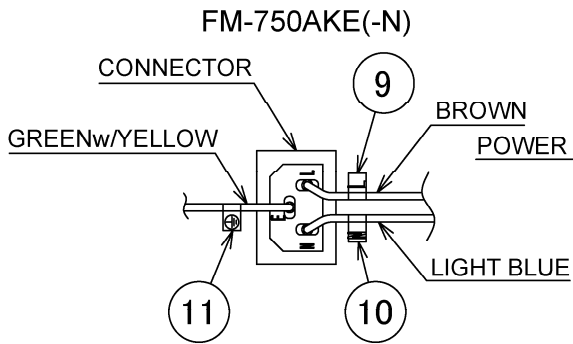
MODEL: FM-750AKE(-N) FM-1000AKE(-N)		TITLE: E. CONTROL BOX ASSY					
INDEX NO.	DESCRIPTION	MATERIAL OR MODEL NUMBER	PART NUMBER	REQ'D NUMBER			
				K-1			
1	CONTROL BOX		120948G01	1			
2	COVER - CONTROL BOX		374380G01	1			
3	TRUSS HEAD MACHINE SCREW		FST0408F0	1			
4	BOARD SUPPORT		414929-01	6			
5	CAPACITOR		459704-01	2			
6	TRUSS HEAD TAPPING SCREW T2	FM-750AKE(-N)	FT20408F0	4			
		FM-1000AKE(-N)	FT20408F0	6			
7	RELAY		406132-08	1			
8	TAPPING SCREW		431415-01	2			
9	CIRCUIT PROTECTOR	FM-750AKE(-N)	425201-05	1			
		FM-1000AKE(-N)	425201-03	1			
10	CLAMP	No.249	427902-03	4			
11	ROCKER SWITCH		460681-01	1			
12	BUSHING		428394-05	1			
13	FUSE HOLDER		4Y2547-01	1			
14	FUSE		451924-02	1			
15	PAN HEAD TAPPING SCREW T2		FT50308F0	1			
16	START CAPACITOR	FM-750AKE(-N)	3A0076-14	1			
		FM-1000AKE(-N)	3A0076-18	1			
17	CAPACITOR	FM-750AKE(-N)	4A1631-01	1			
		FM-1000AKE(-N)	3A2005-13	1			
18	STRAP	FM-750AKE(-N)	434174-04	1			
		FM-1000AKE(-N)	434174-02	1			
19	STARTER	FM-750AKE(-N)	4A1107-02	1			
		FM-1000AKE(-N)	4A1107-13	1			
20	POWER RELAY	FM-1000AKE(-N)	449000-01	1			
21	CONTROLLER BOARD -09CM		P01372-05	1			
22	HARNESS (A)		374365G01	1			
23	HARNESS (B)		473845G01	1			
24	HARNESS (C)		374366G01	1			
25	SPACER		451658-05	4			
26	OPERATION BOARD -09CM		P01373-01	1			
27	FLAT WASHER		FWPL03P0	4			

HE

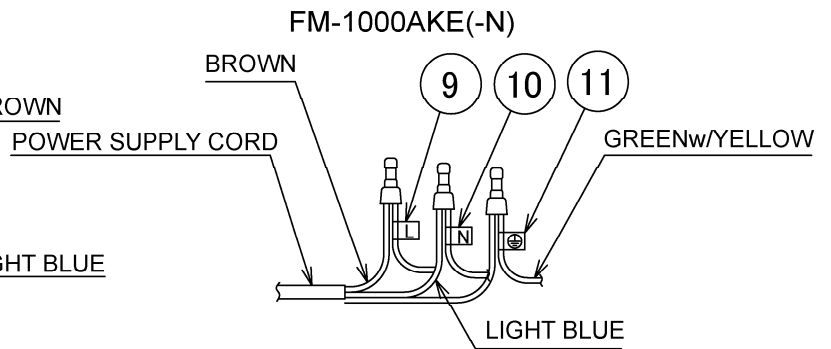
MODEL: FM-750AKE(-N) FM-1000AKE(-N)		TITLE: E. CONTROL BOX ASSY					
INDEX NO.	DESCRIPTION	MATERIAL OR MODEL NUMBER	PART NUMBER	REQ'D NUMBER			
				K-1			
28	NUT		FNH103F0	4			
29	CONTROL LABEL		374148L01	1			
30	LABEL - FUSE		455750-02	1			



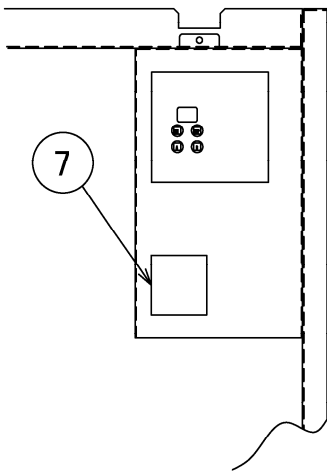
DETAIL LABEL-TERMINAL



DETAIL LABEL-TERMINAL



DETAIL CONTROL BOX



VIEW A

